

**Bandido** creates products that generate harmony and warmth in each space where they are present. We hope you enjoy your new product and exceeds all your expectations.

You can get more information about the maintenance of your product and warranty by scanning the following **QR Code**.



#### Light Source

1 x LED module 15 W  
127 V ~ 60 Hz 15 W LED 0.118 A  
Included  
15 Wh

Indoor use

#### Distrito Bandido

RFC: DBA200515RT3  
Callejón del Cristo 2 - 6A  
Col. San José del Puente  
C.P. 72150. Puebla, Puebla

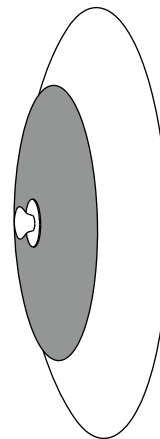
+52 (222) 688 8442  
[www.bandidostudio.com](http://www.bandidostudio.com)

# B

# FASE 25

## Sconce Lamp

Instructions



# Bandido

## Indications of use

**1** Unpack carefully. The materials are brittle and can easily crack.

**2** Follow instructions on back of sheet for installation of this product.

## Spare parts

- To replace the LED module, contact Bandido directly.
- Driver integrated in the product.



Handle with care, fragile materials.



Use only LED bulb

# Installation Guide

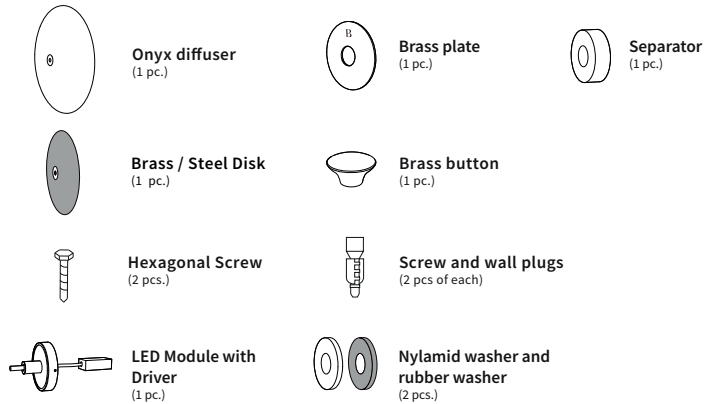
Sconce Lamp



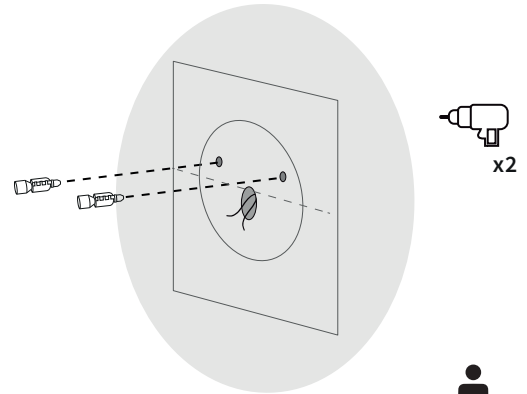
**CAUTION:** Turn off the power supply before executing any electrical installation.

**We suggest that any electrical work should be performed by a qualified electrician.**

## Parts included.

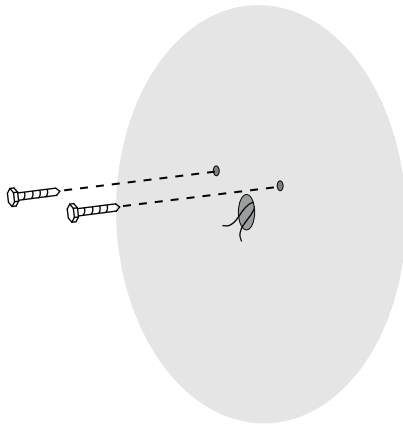


- 1** Before drilling, use the **Fixation Template** to mark the screw positions, ensuring they are aligned, level, and horizontal.



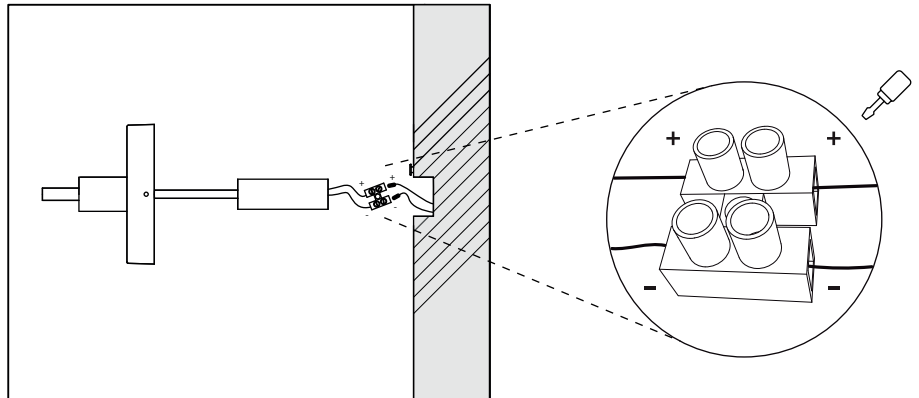
The installation should be done by two people.

- 2** Placement of hexagonal screws.

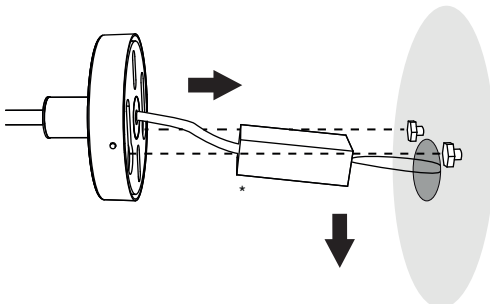


\*Leave a 2-3 mm separation from wall.

- 3** Connect the wires + to + and - to - through the connector.

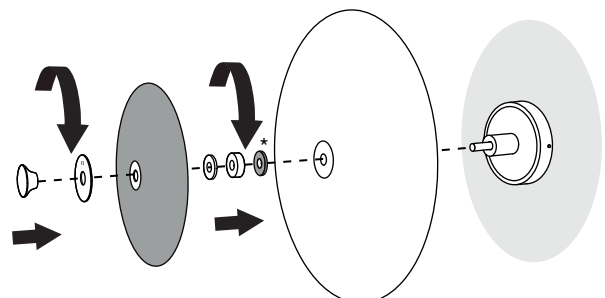


- 4** Carefully align the fixture body and position it onto the hexagonal screws.



\*Place Driver inside the hole on wall.

- 5** Onyx diffuser placement and Brass / Steel disk.



\*Rubber washer.



**Handle with care, fragile materials.**

**B**

# TEMPLATE

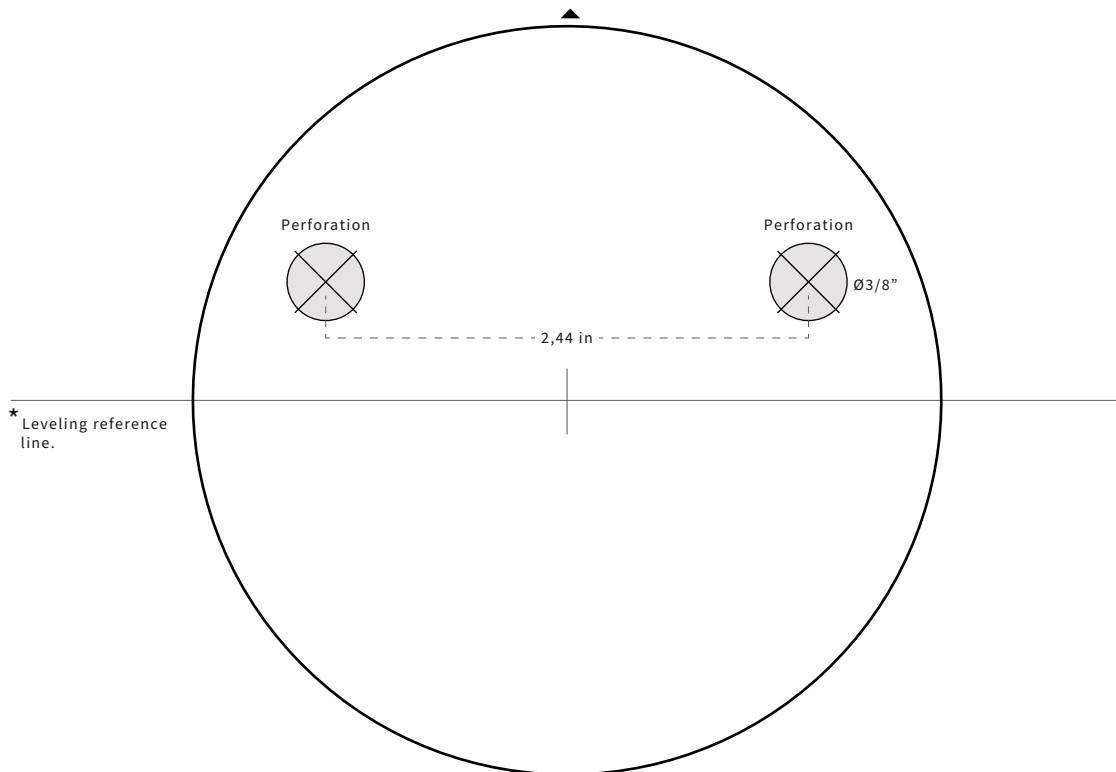
PL01

## Sconce Lamps

### Assembly Instructions

1. Place template on the surface where the sconce lamp will be installed.
2. Align and level the template using reference line.
3. Mark drilling holes with guide bit.
4. Drill using a 3/8" bit.

Scale 1:1



Bandido