

Bandido creates products that generate harmony and warmth in each space where they are present. We hope you enjoy your new product and exceeds all your expectations.

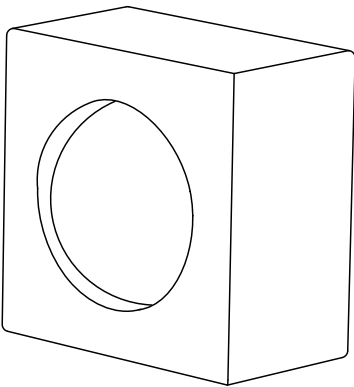
You can get more information about the maintenance of your product and warranty by scanning the following **QR Code**.



B CORE

Sconce Lamp

Instructions



Distrito Bandido

RFC: DBA200515RT3
Callejón del Cristo 2 - 6A
Col. San José del Puente
C.P. 72150. Puebla, Puebla

+52 (222) 688 8442
www.bandidostudio.com

Light Source

1 x G9 LED COB bulb 2.5 W max.
120 V ~ 60 Hz 0.020 A
Included
5 Wh

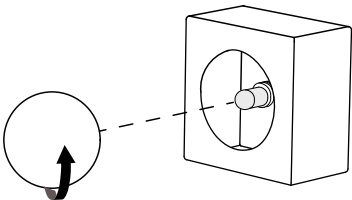
Indoor use

Bandido

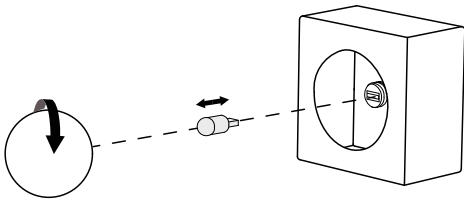
Bulb replacement

Tutorial

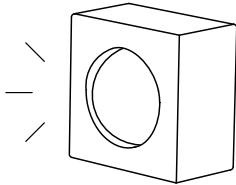
1



2



3



Installation Guide

Pendant Lamp



CAUTION: Turn off the power supply before executing any electrical installation.

We suggest that any electrical work be performed by a specialist.

Parts Included.



Diffuser
(1 pc.)



G9 Bulb
(1 pc.)

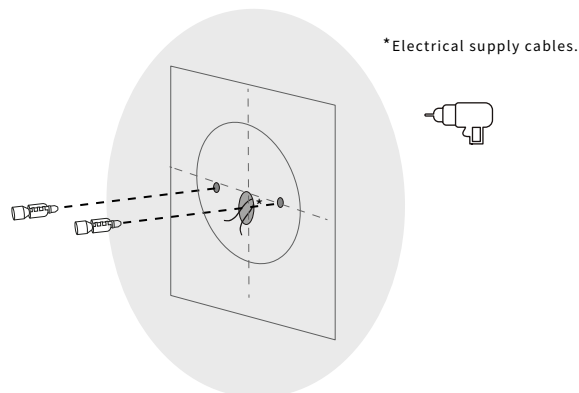


Wall Plug
(2 pcs.)

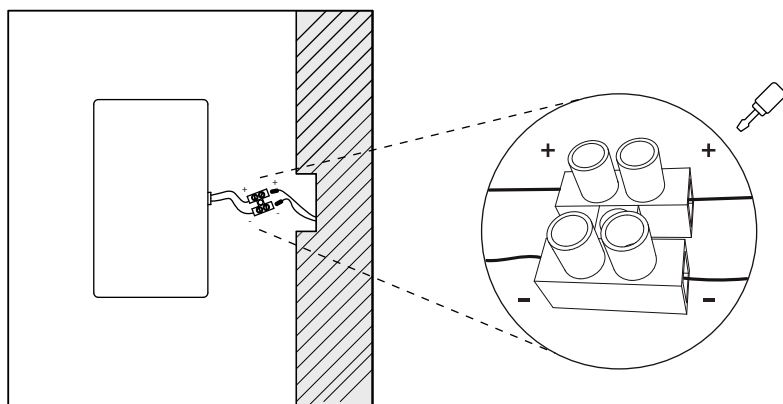


Screws
(2 pcs.)

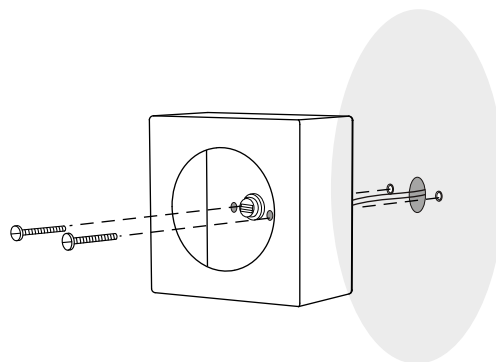
- 1** Placement of wall plugs. Before drilling, mark the location of the screws according to the **Fixing Template** and ensure that they are correctly aligned.



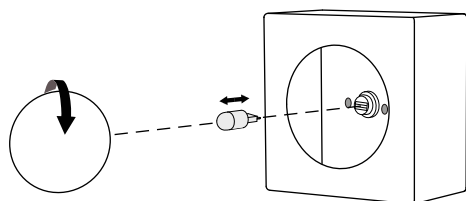
- 2** Connect the cables +with+ & - with- through the connector.



- 3** Mount the light fixture on the wall.



- 4** Place the glass diffuser by turning it clockwise.



Handle with care, fragile materials.

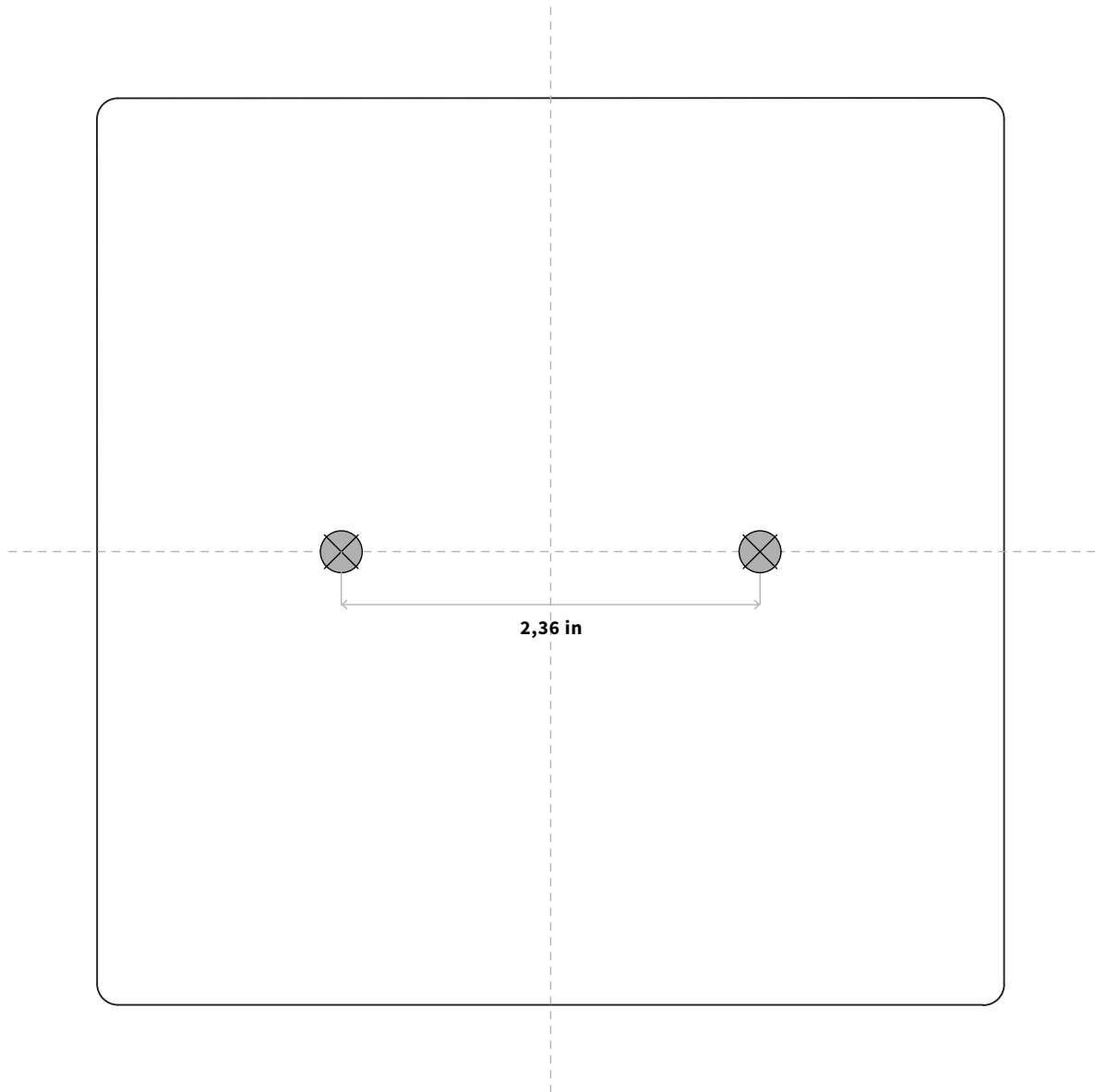
TEMPLATE

PL07

CORE - Sconce Lamp

Installation Guide

1. Place template on the surface where the sconce lamp will be installed.
2. Align and level the template using reference line.
3. Mark drilling holes.
4. Drill.



1:1 Scale

Bandido